

# iPAD / LAPTOP CONNECTION AT HOME

## CONNECTING TO A ROGER™ TOUCHSCREEN

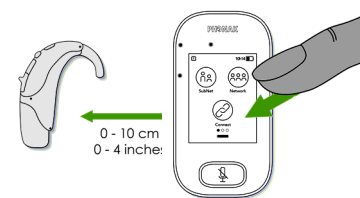
### 1. Turn On

Press and hold on/off button for at least 3 seconds until you get green flashing light on device.



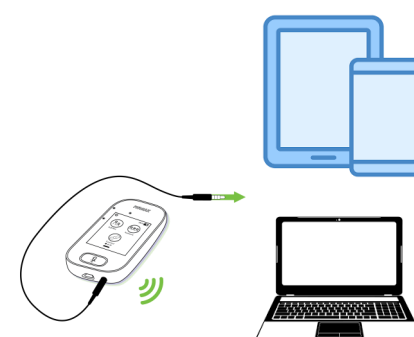
### 2. Connect to Hearing Aid Receiver / MyLink (if required)

Press the link/connect button and hold within 5 cm to either the In-built Roger Receiver, Roger X Receiver or Roger MyLink. Student will hear beep upon connection.



### 3. Connect to Touchscreen

Connect 3.5mm cable to Touchscreen . Ensure that "Input" is selected on Touchscreen



### 4. Connect to Device

Connect the Touchscreen to any device including laptop, iPad or computer using the 3.5 audio cable plugged into the headphone jack. Ensure PC sound settings are set for headphones.

**Note**—Ensure the microphone on your device is enabled on laptop or iPad when video conferencing and calling as your Roger device will NOT transmit through your device to your teacher .

## CONNECTING TO A ROGER™ MEDIAHUB

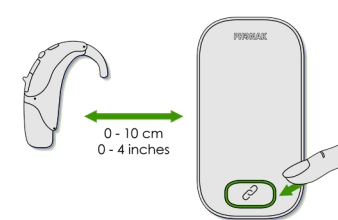
### 1. Turn On

Press and hold on/off button for at least 3 seconds until you get green flashing light on device.



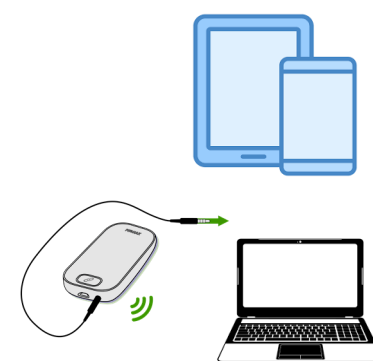
### 2. Connect to Receiver / MyLink

Press the link/connect button and hold within 5 cm to either the MyLink or Roger X receiver. Student will hear beep upon connection.



### 3. Connect to Audio Source

Connect the MediaHub to the device using the 3.5 audio cable directly from the media hub to the computer using the headphone jack of computer/tablet or phone. Ensure PC sound settings are set for headphones.



**Note**—Ensure the microphone on your device is enabled on laptop or iPad when video conferencing and calling as your Roger device will NOT transmit through your device to your teacher .